



A. Uberti S.p.A.

Via Artigiani, 1 - Gardone V.T. (Brescia) - ITALY

Instruction Manual

BEFORE REMOVING THE FIREARM FROM THIS PACKAGE,
READ & UNDERSTAND THE PRECAUTIONS IN THE
INSTRUCTIONS MANUAL

SLIDE CARBINE AND RIFLE

SPECIAL SAFETY INSTRUCTIONS

- 1) NEVER TRANSPORT YOUR UBERTI RIFLE OR CARBINE WITH A CARTRIDGE IN THE CHAMBER.
- 2) DUE TO THE FACT THAT THE CARTRIDGES ARE INSERTED INTO THE MAGAZINE TUBE ONE ON TOP OF THE OTHER, IT IS RECOMMENDED THE USE OF FLAT HEADED CARTRIDGES. NEVER USE POINTED OR ROUNDED CARTRIDGES IN THIS GUN.
- 3) NEVER USE OLD CARTRIDGES IN THIS RIFLE BECAUSE THE BRASS POWDER, AFTER A CERTAIN PERIOD OF TIME, CAN DETERIORATE AND DAMAGE YOUR FIREARM CAUSING DAMAGE TO YOUR GUN AND YOURSELF.
- 4) NEVER USE CARTRIDGES MARKED "HIGH SPEED" OR "HIGH VELOCITY"
- 5) UBERTI ASSUMES NO LIABILITY FOR ACCIDENTS CAUSED BY THE USE OF RELOADED AMMUNITION.

USE ONLY COMMERCIALY LOADED CARTRIDGES THAT HAVE BEEN LOADED IN ACCORDANCE WITH SAAMI-C.I.P. STANDARDS

LOADING:

1) Open the bolt by pulling the forend backward (in a decisive manner). The forend controls the cocking slide (NB the internal cartridge follower must be completely raised). See Photo 1.

2) Load the magazine tube by pushing the cartridges into the loading gate which is positioned on the right hand side of the frame. Push the cartridge forward and insert



in the magazine tube. See Photo 2. When loading the cartridges through the loading gate, to make it easier, make sure that the rim of each cartridge (keeping it

positioned with your hand) protrudes enough to keep the loading gate open (see Photo 3). When inserting the last cartridge, push it entirely into the magazine tube so that the loading gate closes. To better function, do not fully load the magazine tube. Too many cartridges in the magazine tube may cause a malfunction.

3) When you are ready to fire, push the forend forward and then pull it backward; push it forward to be able to load the cartridge into the chamber. All movements must be done in a very determined manner otherwise the bolt will not close completely and the firing pin safety will still be inserted. Never touch the trigger whilst handling the gun (see photo 4)

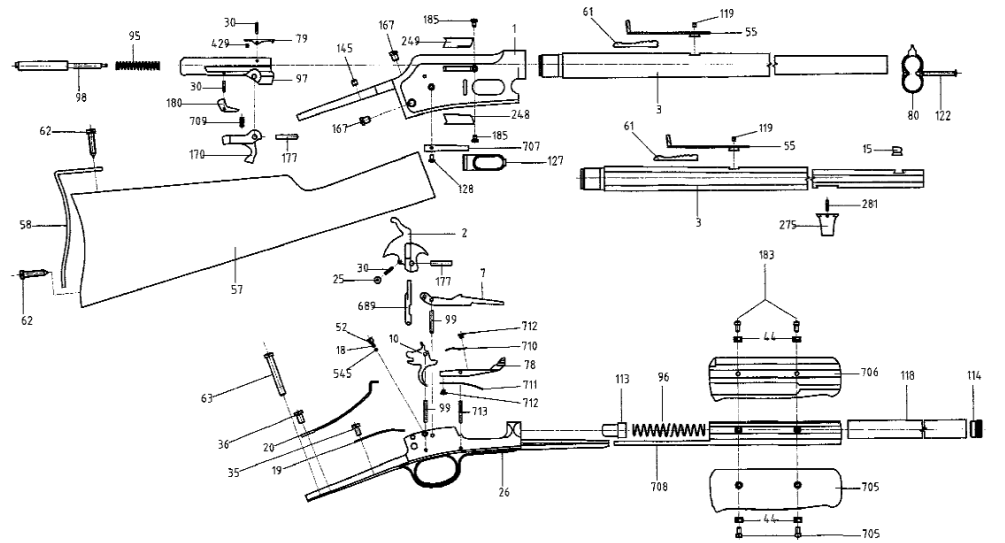
The gun is now fully loaded and ready to shoot once the trigger is pulled. Aim towards your target, pull the trigger as far back as it will go (the hammer has an internal transfer bar that is controlled by the trigger)

4) After firing the first shot, load the second round by repeating Point 3), i.e. pull the forend completely backward and push it completely forward so that the bolt is completely closed because only in that position the internal safety will release the firing pin (so, if you say the gun has misfired, it is almost 100% certain that you have pulled the trigger whilst the firing pin safety was still in function and because the bolt was not in the correct firing position). Close the bolt ONLY BY USING THE FOREND, NEVER WITH YOUR HANDS.



Slide Carbine

N.	Code No.	Q.ty	Description	N.	Code No.	Q.ty	Description
1	7000001	1	Frame	705	7000705	1	Right Forend
2	7000002	1	Hammer	706	7000706	1	Left Forend
3	7000003	1	Barrel 20" .45 L.C.	707	7000707	1	Loading Gate Spring
7	7000007	1	Cartridge Carrier .45	708	7000708	1	Slide
10	7000010	1	Trigger	709	7000709	1	Locking Brace Spring
18	7000018	1	Cartridge Carrier Spring	710	7000710	1	Cart. Stop Spring (TOP)
19	7000019	1	Trigger Spring	711	7000711	1	Cart. Stop Spring (LOWER)
20	7000020	1	Main Spring	712	7000712	2	Cart. Stop Spring Screw
25	0000025	1	Hammer Roll	713	0850099	1	Cart. Stop Spring Pin
26	7000026	1	Trigger Guard	ALTERNATIVES CARBINE			
30	7000030	3	Hammer Roll Pin	3	7001003	1	Barrel 20" .44-40
35	7000035	1	Trigger Spring Screw	3	7002003	1	Barrel 20" .357MAG.
36	7000036	1	Main Spring Screw	3	7005003	1	Barrel 20" .38 SPEC.
44	0602044	4	Forend Cap	3	7012003	1	Barrel 24.1/4" .45 L.C.
52	7000052	1	Cartridge Carrier Screw	3	7013003	1	Barrel 24.1/4" .44-40
55	0242055	1	Rear Sight	3	7014003	1	Barrel 24.1/4" .357MAG.
57	7000057	1	Butt Stock	3	7017003	1	Barrel 24.1/4" .38 SPEC.
58	0240058	1	Butt Plate	3	7006003	1	Barrel 26" .45 L.C.
61	0242061	1	Rear Sight Windage	3	7007003	1	Barrel 26" .44-40
62	0200062	2	Butt Plate Screw	3	7008003	1	Barrel 26" .357MAG.
63	7000063	1	Tang Screw	3	7011003	1	Barrel 26" .38 SPEC.
78	7000078	1	Cartridge Stop	7	7002007	1	Cartridge Carrier .357M-.38SP.
79	7000079	1	Extractor	96	7012096	1	Magazine Carrier 24.1/4"
80	0240080	1	Front Band	96	7006096	1	Magazine Spring 26"
95	7000095	1	Firing Pin Spring	97	7001097	1	Bolt .44-40
96	7000096	1	Magazine Spring 20"	97	7002097	1	Bolt .357M. / .38SP
97	7000097	1	Bolt .45	118	7012118	1	Magazine Tube 24.1/4"
98	7000098	1	Firing Pin	118	7006118	1	Magazine Tube 26"
99	7000099	2	(Trigger-Cartridge Carrier) Pin	248	7002248	1	Right Ejector .357 - .38
113	7000113	1	Magazine Follower	249	7002249	1	Left Ejector .357 - .38
114	7000114	1	Magazine Tube Plug	ALTERNATIVES RIFLE			
118	7000118	1	Magazine Tube 20"	3	7056003	1	Barrel 20" .45 L.C.
119	0400692	1	Rear Screw	3	7057003	1	Barrel 20" .44-40
121	0200122	1	Band Screw	3	7058003	1	Barrel 20" .357MAG.
127	7000127	1	Loading Gate	3	7061003	1	Barrel 20" .38 SPEC.
128	7000128	1	Loading Gate Spring Screw	3	7062003	1	Barrel 24.1/4" .45 L.C.
145	0400145	1	Blank Tang Screw	3	7063003	1	Barrel 24.1/4" .44-40
167	7000167	2	Frame Screw	3	7064003	1	Barrel 24.1/4" .357MAG.
170	7000170	1	Locking Brace	3	7067003	1	Barrel 24.1/4" .38 SPEC.
177	7000177	2	(Locking Brace-Hammer) Pin	3	7050003	1	Barrel 26" .45 L.C.
180	7000180	1	Firing Pin Lever	3	7051003	1	Barrel 26" .44-40
183	7000183	4	Forend Screw	3	7052003	1	Barrel 26" .357MAG.
185	7000185	2	Ejector Screw	3	7055003	1	Barrel 26" .38 SPEC.
248	7000248	1	Right Ejector .45	15	0202015	1	Front Sight
249	7000249	1	Left Ejector .45	57	7050057	1	Butt Stock
429	7000429	1	Extractor Spring	58	0242058	1	Butt Plate
545	0238545	1	Cartridge Carrier Sphere	275	0202275	1	Magazine Tube Bearing
689	7000689	1	Transfer Bar	281	0202281	1	Magazine Tube Bearing Pin



UNLOADING

5) With your gun pointed in a safe direction, repeat operation 3), i.e. pull the forend backward, NEVER TOUCH THE TRIGGER. The cartridge that was in the chamber will be automatically expelled and another cartridge will be taken from the magazine tube and inserted into the chamber in place of the one just expelled.

6) Repeat this operation until all the cartridges have been expelled. After all cartridges have been expelled, repeat the same movements described in point 5) for three or four times to make sure all the cartridges have been expelled.

7) Now, pull the forend completely backward and visually check the chamber to be sure there are no cartridges in the chamber.

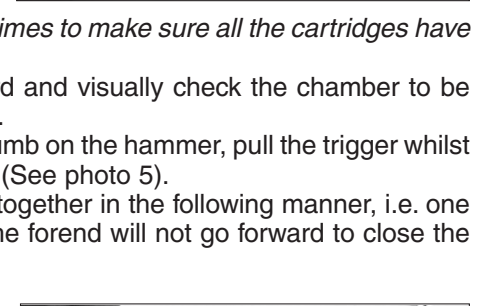
8) Push the forend forward and, with your thumb on the hammer, pull the trigger whilst your thumb is gently releasing the hammer. (See photo 5).

N.B. If two cartridges should ever appear together in the following manner, i.e. one on top of the carrier and one underneath, the forend will not go forward to close the bolt. If this happens you need to:

a) Unscrew the magazine tube plug and take out the magazine spring, magazine follower and all cartridges in the magazine tube (see photo 6).

b) Slightly unscrew the two guide screws, left and right (see photo 7)

c) Place the top cartridge into the chamber from above without **EVER TOUCHING THE TRIGGER** (See photo 8).



d) The cartridge positioned under the carrier is to be inserted into the magazine tube with the help of a small screwdriver that will pass through the carrier. (See photo 9).

e) Take the cartridge out of the magazine tube, re-assemble the magazine follower, magazine spring and screw on the magazine tube plug.

